

# About your Soprobe<sup>®</sup> medication for paediatric use



## Soprobe (beclometasone dipropionate) and asthma

You have been prescribed Soprobe to help you manage your asthma. Soprobe is what's known as a **preventer** medicine and it works by preventing symptoms such as wheezing and breathlessness by reducing inflammation of the airways in the lungs.<sup>1</sup>

This information sheet explains how to use your Soprobe inhaler effectively with a Volumatic Spacer Device to make sure the medicine reaches your lungs where it is needed. Using the Volumatic Spacer Device with a face mask may help in children under 5 years.

**It is important to read the product package leaflet provided with your medicine. This information is not a substitute for the product package leaflet. The package leaflet contains additional important information on the use of the medicine.**

## Using your inhaler with a Volumatic Spacer Device – a step-by-step guide<sup>1,2</sup>

1. **Fit the two halves of the Volumatic Spacer Device together**, by lining up the notch on one half with the slot on the other. (Figure 1)
2. **Take off the mouthpiece cover** of the inhaler by holding it between your thumb and forefinger. (Figure 2)  
**Test your inhaler** by releasing one puff into the air if it is new or has not been used for three days or more.

Figure 1

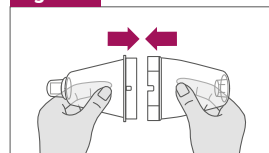
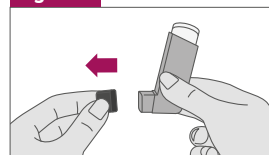
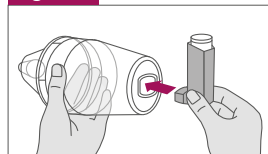


Figure 2

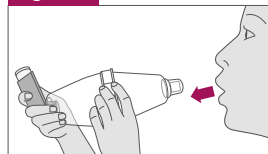


3. **Fit the inhaler firmly into the end of the Volumatic Spacer Device**, opposite the mouthpiece. Check the mouthpiece of the Volumatic Spacer Device inside and outside to make sure that it is clean. (Figure 3)
4. Hold the device as shown (Figure 4) and breathe out as far as is comfortable.
5. Close your lips firmly around the mouthpiece but do not bite it.  
**Do not put your lips over the side holes of the mouthpiece, as the valve will not work.**
6. Press down with your finger(s) on the top of the inhaler to release one puff of medicine. **Straight away take one deep steady breath or 5 normal breaths to make sure that the medicine goes into your lungs. You do not need to take the Volumatic Spacer Device out of your mouth to breathe out.** (Figure 5) You should be able to hear the mouthpiece valve 'click' or rattle as you breathe in and out. If you are not able to hear a rattle, hold the Volumatic Spacer Device up at an angle and try again.  
**You must inhale one puff at a time.**
7. Hold your breath for a few seconds; take the Volumatic Spacer Device out of your mouth. (Figure 6)
8. If you need to take more than one puff, remove the inhaler by tilting the top forward and repeat steps 3 to 9. Wait for around 30 seconds before taking each puff of medicine.
9. After use, remove the inhaler from the Volumatic Spacer Device. Replace the mouthpiece cover.

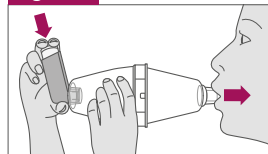
**Figure 3**



**Figure 4**



**Figure 5**



**Figure 6**



**Find more information at**  
**[soprobecc.co.uk/patient](https://www.soprobecc.co.uk/patient)**



**Reporting of side effects**

If you experience any side effects, talk to your doctor, pharmacist or nurse. This includes any side effects not listed in the package leaflet. You can also report side effects directly via the Yellow Card Scheme at [www.mhra.gov.uk/yellowcard](https://www.mhra.gov.uk/yellowcard). By reporting side effects, you can help provide more information on the safety of this medicine.

**References:** 1. Soprobecc Patient Information Leaflet. 2. Volumatic Spacer Device Patient Information Leaflet.

Soprobecc® is a registered trademark of Glenmark Pharmaceuticals Europe Limited. This leaflet has been produced by Glenmark Pharmaceuticals Europe Ltd. © 2024 Glenmark Pharmaceuticals Europe Ltd. All rights reserved. Date of preparation: December 2024 NP-UK-SOP-0069

